



we DREAM



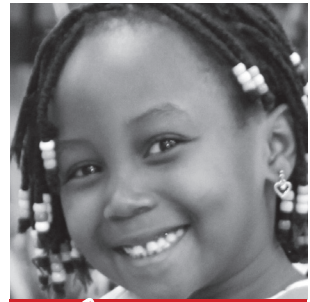
we GROW



we PLAN



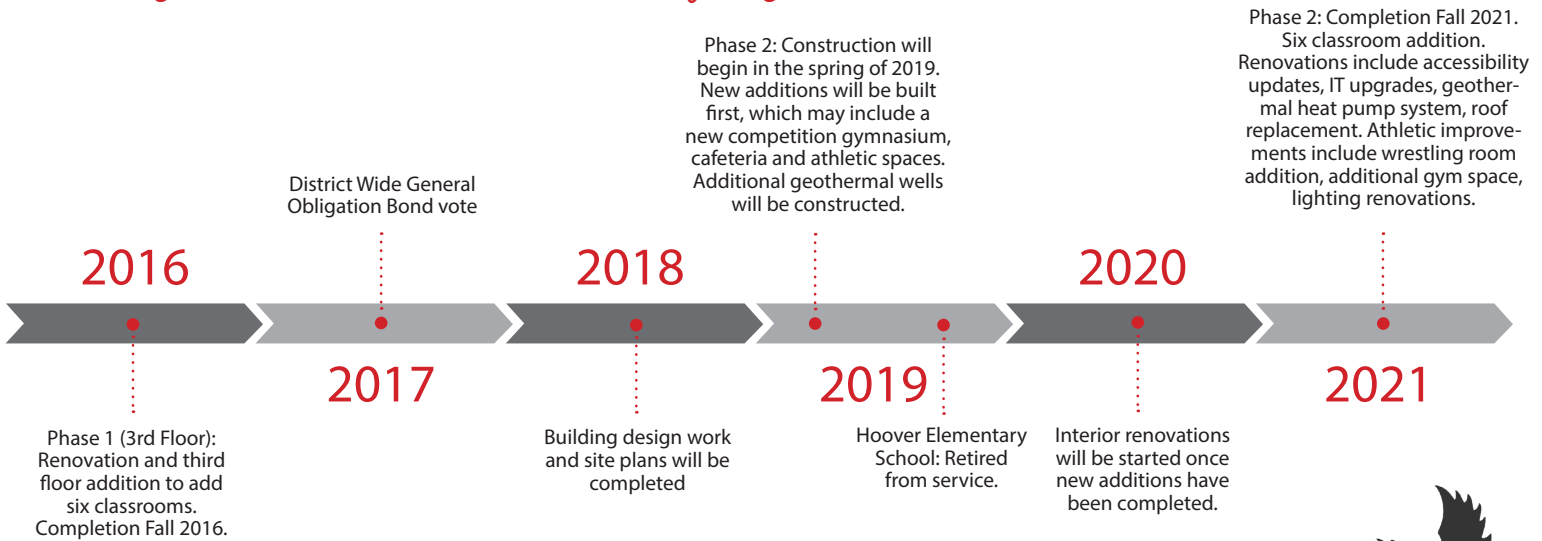
we BUILD



we THRIVE

City High: 6 Year Preview

Looking ahead to the future of City High School



City High Pre/Post Renovation Statistics

	Before	After
Total Acres	36	42
Total Sq. Footage	279,277	308,577*
Total # of Classrooms	79	91*

Comparison to other District High Schools

	West	Liberty
Total Acres	80	72
Total Sq. Footage	335,894*	300,911*
Total # of Classrooms	96*	92*

* Subject to approved final designs



IOWA CITY
COMMUNITY
SCHOOL DISTRICT
Child-Centered : Future-Focused

City High Project Impact

Additions to the CHS campus that will expand the footprint of the building

- Competitive Gymnasium
- 6 Classrooms
- Cafeteria Expansion

Items likely to be displaced from the CHS campus when additions occur:

- Green space used for curricular and extra-curricular activities
- Tennis Courts
- Softball Field
- Parking

Impact if those items are displaced:

- Reduced access for all students
- Reduced engagement by students with additional barriers to participation



Operational Cost Comparison

	500 Student Elementary	300 Student Elementary
STAFFING		
Principal	\$127,515.68	\$127,515.68
Teachers-Regular Education	\$1,739,331.93	\$1,242,379.95
Teachers-Specials (PE, art, music)	\$248,475.99	\$245,162.98
Teachers-Librarian	\$82,825.33	\$82,825.33
Teachers-Guidance Counselor	\$82,825.33	\$82,825.33
Secretary-Building	\$54,369.00	\$36,246.00
Secretary-Media	\$21,601.13	\$19,939.50
Paraeducators-Supervisory	\$23,071.13	\$3,495.63
Custodian	\$94,080.00	\$94,080.00
Stipends (webmaster, science, student council)	\$6,463.80	\$6,463.80
Total staffing needs	\$2,480,559.31	\$1,940,934.19
OPERATIONS		
Utilities and Maintenance	\$155,678.00	\$155,678.00
Building Budget Allocation	\$35,925.00	\$23,400.00
Total other budget needs	\$191,603.00	\$179,078.00
Totals	\$2,672,162.31	\$2,120,012.19
Cost Per Pupil	\$5,344.32	\$7,066.71

“ The planned facility improvement projects for City High School are extremely exciting. Without question, City High is one of the most classic and historic high school campuses in the state of Iowa. Built in 1938, our building and grounds have been immaculately maintained and cared for. It is truly a treasure for our community. However, as we look to meet the 21st century needs of students and keep pace with new, more modern schools across the state, the planned facility projects are essential. A new competition gymnasium, new cafeteria, and additional classroom space strengthens our beautiful high school and sets us up to serve students at a high level into the future. ”

~ John Bacon
City High Principal



Elementary Project Impact

City High renovations are connected to several other pieces of the Facilities Master Plan. As the Hoover campus becomes a part of the City High School campus, several additional building renovations become possible. Without the closing of Hoover, the following District projects may not be possible:

- **New Hoover Elementary construction:** New 500 student elementary. Scheduled completion fall 2017.
- **Longfellow Elementary renovations:** Historical renovation of building and gymnasium addition. Scheduled completion fall 2018.
- **Lincoln Elementary renovations:** Gymnasium addition (pending property acquisition), accessibility renovations, roof replacement, fan coil unit HVAC system, window replacement. Scheduled completion fall 2019.
- **Mann Elementary renovations:** Historical renovation of building and gymnasium addition. Scheduled completion fall 2019.