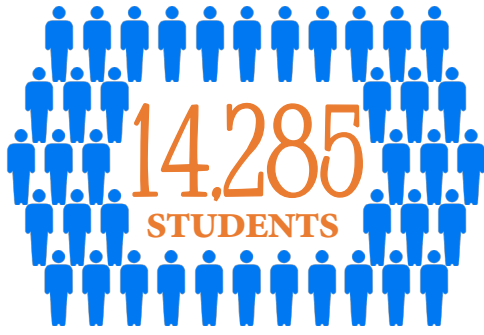
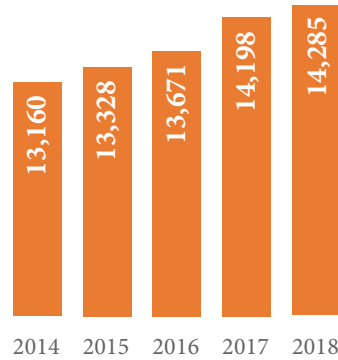


# OUR STUDENTS



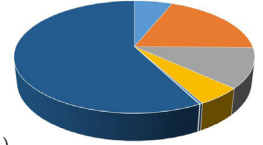
- 9.0% English Language Learners
- 9.6% Students receiving special education services
- 38.9% Low socioeconomic status students

## CERTIFIED ENROLLMENT



## STUDENT DIVERSITY

- Asian (5.8%)
- Black (19.9%)
- Hispanic (11.8%)
- Multi-racial (5.6%)
- Native American/Alaskan (<1%)
- Pacific Islander/Other (<1%)
- White (56.6%)



**OVER 90**  
LANGUAGES  
SPOKEN

# OUR SCHOOLS & STAFF



- 17 PRESCHOOL SITES
- 21 ELEMENTARY SCHOOLS
- 3 JUNIOR HIGH SCHOOLS
- 3 HIGH SCHOOLS
- 1 ALTERNATIVE HIGH SCHOOL

DES MOINES  
CEDAR RAPIDS  
DAVENPORT  
SIOUX CITY  
IOWA CITY  
ANKENY  
WATERLOO  
DUBUQUE  
WAUKEE  
COUNCIL BLUFFS

**5<sup>th</sup>**  
LARGEST  
SCHOOL  
DISTRICT  
IN IOWA

DISTRICT SIZE  
**133**  
SQ. MILES

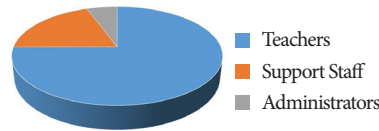


## CLASSROOM-FOCUSED PRIORITIES

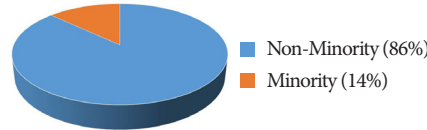
**84%**

OF ANNUAL DISTRICT BUDGET IS SPENT ON PERSONNEL COSTS.

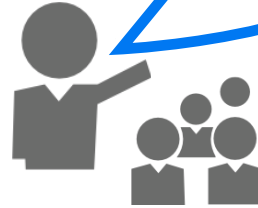
## SALARY/BENEFIT COSTS



## STAFF DIVERSITY

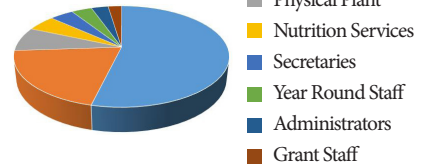


Information based on voluntary data provided by employees.



**OVER 2,100**  
EMPLOYEES

## TOTAL STAFF



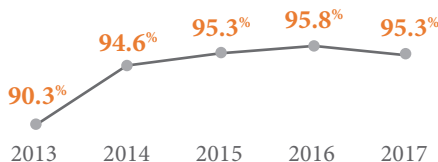
## MORE THAN:

**5,000** Students Transported by Bus Every Day  
**10,500** Meals Prepared & Served Every Day

# RAISING THE BAR

## GRADUATION RATES:

5 year cohort graduation rate



**DROPOUT RATE: 1.3%**

**81%** OF DISTRICT GRADUATES INTEND TO PURSUE POST SECONDARY EDUCATION

**1,117**  
STUDENTS ENROLLED IN AP COURSES WHO TOOK AP EXAMS

**328**  
STUDENTS ENROLLED IN KIRKWOOD REGIONAL CENTER ACADEMIES

**164**  
STUDENTS ENROLLED IN PSEO AND ALTERNATIVE CONCURRENT COURSES

## [ 2017-18 ACT AVG. COMPOSITE SCORES ]

