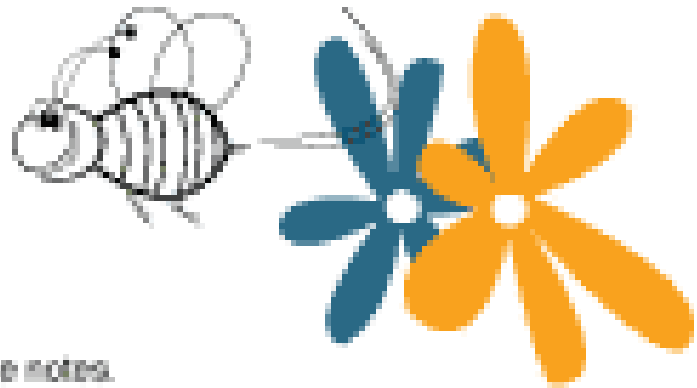


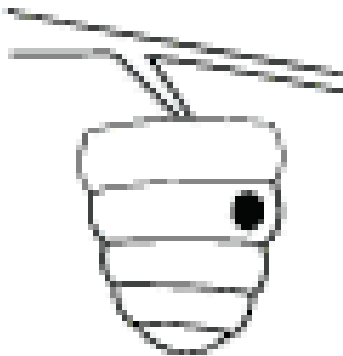
MUSICAL SPELLING BEE

Treble Clef Note Names



Spell the word below the staff in whole notes.

BAG

A treble clef staff with three whole notes on the lines: G4, A4, and B4.

FACE

An empty treble clef staff with the word "FACE" written below it.

BEE

An empty treble clef staff with the word "BEE" written below it.

EDGE

An empty treble clef staff with the word "EDGE" written below it.

BAGGAGE

An empty treble clef staff with the word "BAGGAGE" written below it.

CAGE

An empty treble clef staff with the word "CAGE" written below it.

FADED

An empty treble clef staff with the word "FADED" written below it.

EGG

An empty treble clef staff with the word "EGG" written below it.

DAD

An empty treble clef staff with the word "DAD" written below it.

CABBAGE

An empty treble clef staff with the word "CABBAGE" written below it.