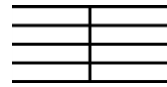


## BASIC THEORY #3 – Special Signs

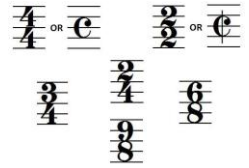
**REPEAT SIGN:** go back to the beginning and perform it again



**BAR LINE:** is used to divide music into groups of beats



**METER:** tells you how many beats are in each measure



**DOUBLE BAR LINE:** tells you it is the end of the song



**CODA:** a special ending for the song

**CODA**



**SHARP:** a sign that makes a pitch sound ½ step higher



**FLAT:** a sign that makes a pitch sound ½ step lower

