

# Facilities Master Plan

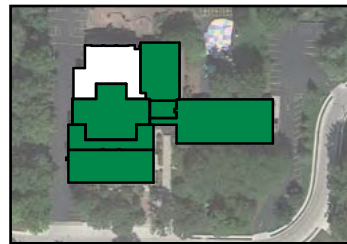
Approved by Board 7/23/2013



## Elementary



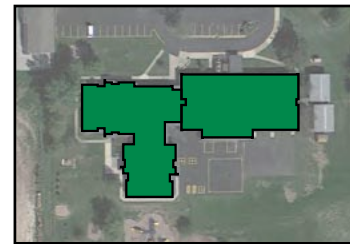
Borlaug Elementary



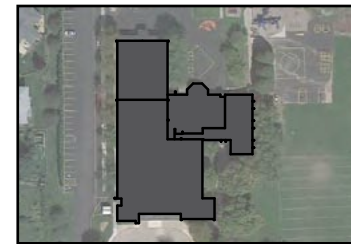
Coralville Central Elem.



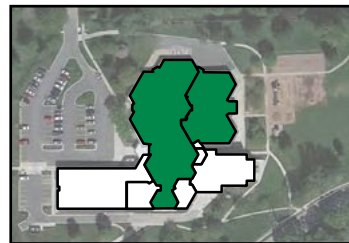
Garner Elementary



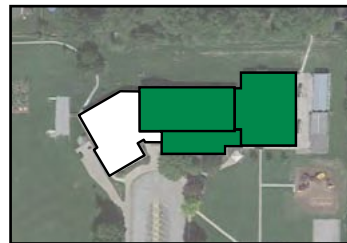
Hills Elementary



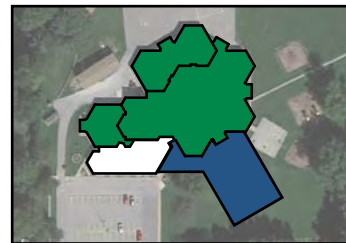
Hoover Elementary



Horn Elementary



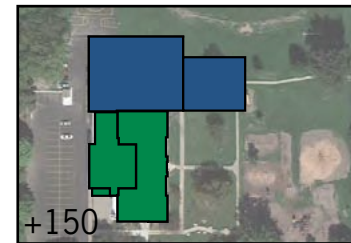
Kirkwood Elementary



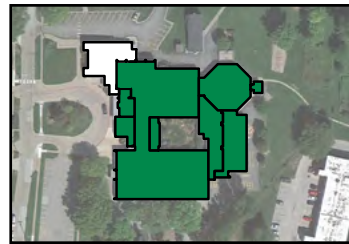
Lemme Elementary



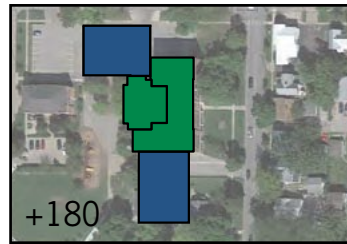
Lincoln Elementary



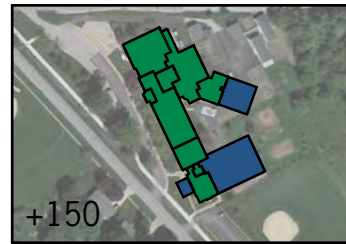
Historically Renovated Longfellow Elementary



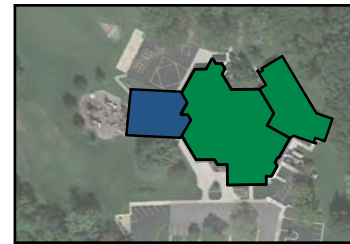
Lucas Elementary



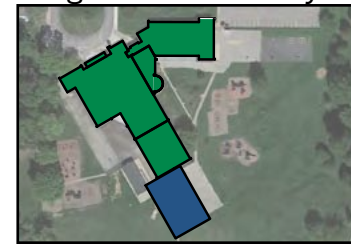
Historically Renovated Mann Elementary



Penn Elementary



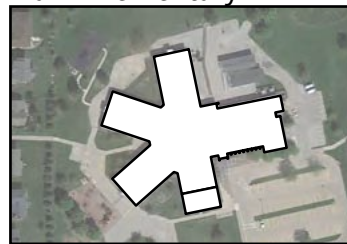
Shimek Elementary



Twain Elementary



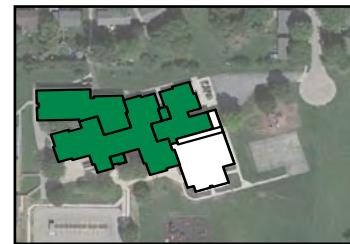
Van Allen Elementary



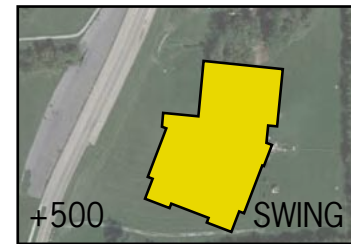
Weber Elementary



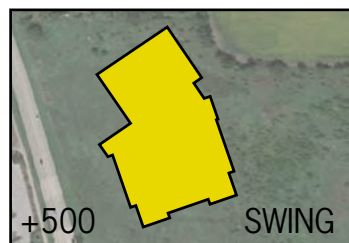
Wickham Elementary



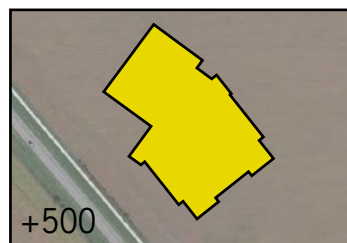
Wood Elementary



New East Iowa City Elementary

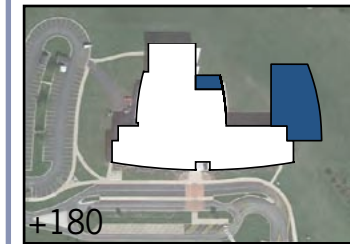


New South Iowa City Elementary

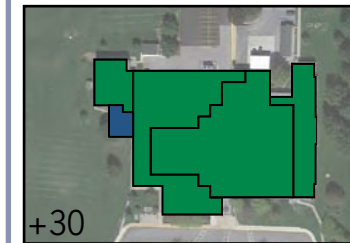


New North Johnson County Elementary

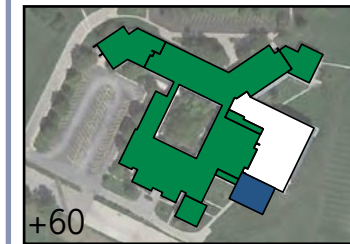
## Junior High



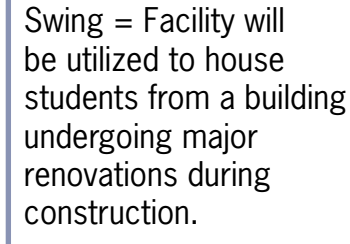
North Central Junior High



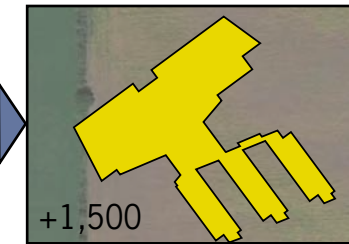
Northwest Junior High



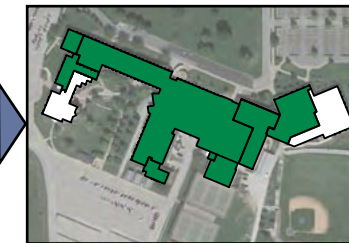
South East Junior High



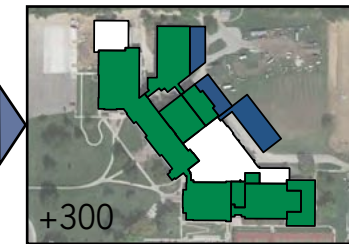
## High School



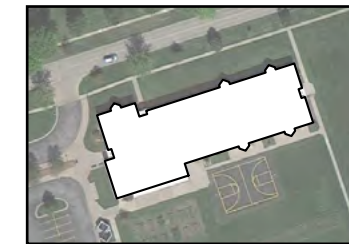
New High School



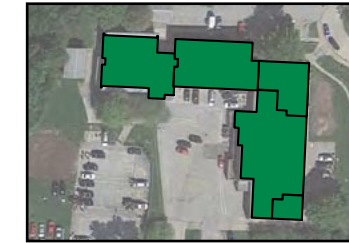
West High School



City High School



Tate High School



TREC

Swing = Facility will be utilized to house students from a building undergoing major renovations during construction.

- Existing
- Renovate
- Addition
- New Construction
- Retire

### ELEMENTARY SCHOOLS (K-6)

Three new elementary schools on new sites are proposed. Hoover Elementary School is retired to accommodate City High expansion. Penn Elementary School receives a classroom addition to seat an additional 150 students. A historic renovation and addition are proposed at both Mann and Longfellow Elementary Schools.

### JUNIOR HIGH SCHOOLS (7-8)

North Central Junior High School receives a large classroom addition while Northwest and South East Junior High Schools receive minor classroom additions and renovations.

### HIGH SCHOOLS (9-12)

A new third comprehensive high school (capacity 1,500) is proposed, along with additions to City High School to mirror the current capacity of West High School. West High School and TREC receive renovations.

Projected Enrollment	15,372
Capacity	15,629
First Costs	\$252.0 M
Lifecycle Costs	\$3,198 M
Average Annual Operating & Staff Costs	\$98.2 M
Total Square Footage	2,466,130
Educational Adequacy Score	84.7
Cost Benefit Ratio	196.1

### Features

- Clear feeder system
- New elementary schools and junior high school additions located in areas of growth/need
- City HS can accommodate growth
- Historically renovates Longfellow and Mann Elementary Schools.



# Facilities Master Plan

Approved by Board 7/23/2013

	DESCRIPTION OF WORK (See Physical Needs Assessment Report for complete description of renovations)	Renovate	Addition	New Const.	Retire	GRADE ALIGNMENT	CAPACITY	TOTAL COST
								(in millions of dollars)
<b>ELEMENTARY SCHOOLS</b>	<b>2022-2023 Projected Elementary (K-6) Enrollment = 8,317</b>						<b>8,131</b>	<b>\$117.2</b>
BORLAUG ELEM.	Minor repairs.					K-6	451	\$0.008
CORALVILLE CENTRAL ELEM.	Accessibility renovations, masonry tuckpointing, rooftop HVAC replacement.					K-6	362	\$4.8
GARNER ELEM.	Playground sod replacement, minor repairs.					K-6	445	\$0.1
HILLS ELEM.	Building code repairs.					K-6	189	\$0.8
HOOVER ELEM.	Building code repairs and temporary air conditioning. Discontinued use as a school no earlier than the 2017-18 school year. Demolition costs included.							\$1.5
HORN ELEM.	Accessibility renovations, interior lighting upgrade, classroom door replacement.					K-6	410	\$1.0
KIRKWOOD ELEM.	Rooftop AHU VAV System and roofing replacement.					K-6	306	\$4.0
LEMME ELEM.	Gymnasium addition. Window replacement and IT upgrades.					K-6	351	\$2.5
LINCOLN ELEM.	Gymnasium addition, pending property acquisition. Accessibility renovations, roof replacement, fan coil unit HVAC system, window replacement.					K-6	187	\$4.1
LONGFELLOW ELEM.	Historical renovation of building. Addition of 6 classrooms and gymnasium.					K-6	408	\$12.6
LUCAS ELEM.	Interior lighting upgrades, water source heat pump HVAC system, ceiling replacement, window wall replacement.					K-6	381	\$4.1
MANN ELEM.	Historical renovation of building. Addition of 7 classrooms and gymnasium.					K-6	417	\$12.9
PENN ELEM.	Addition includes 6 classrooms. Renovations include HVAC system upgrade, carpet replacement, and IT upgrades.					K-6	537	\$9.6
SHIMEK ELEM.	Gymnasium addition. Renovations include roof replacement and water source heat pump HVAC system.					K-6	239	\$4.1
TWAIN ELEM.	Gymnasium addition. Renovations include accessibility renovations, water source heat pump HVAC system, and window wall replacement.					K-6	252	\$5.8
VAN ALLEN ELEM.	Minor repairs.					K-6	464	\$0.4
WEBER ELEM.	IT upgrades, interior lighting upgrades.					K-6	396	\$0.8
WICKHAM ELEM.	IT upgrades, gym floor repairs.					K-6	428	\$1.2
WOOD ELEM.	Fan coil unit HVAC system, roof replacement.					K-6	408	\$3.4
NEW ELEM.	New 500 student elementary.					K-6	500	\$14.5
NEW ELEM.	New 500 student elementary.					K-6	500	\$14.5
NEW ELEM.	New 500 student elementary.					K-6	500	\$14.5
<b>JUNIOR HIGH SCHOOLS</b>	<b>2022-2023 Projected Junior High (7-8) Enrollment = 2,469</b>						<b>2,476</b>	<b>\$27.9</b>
NORTH CENTRAL JH	Addition includes 8 classrooms, library and cafeteria expansions.					7-8	816	\$6.3
NORTHWEST JH	Addition includes 1 classroom. Renovations include roof replacement, IT upgrades, interior lighting upgrades and VAV air handling unit HVAC system.					7-8	836	\$10.7
SOUTH EAST JH	Addition includes 2 classrooms. Renovations include accessibility renovations, HVAC system renovations, interior lighting upgrades, locker replacement, and roof replacement.					7-8	824	\$10.9
<b>HIGH SCHOOLS</b>	<b>2022-2023 Projected High School (9-12) Enrollment = 4,586</b>						<b>5,022</b>	<b>\$106.9</b>
CITY HS	Addition includes 12 classrooms, cafeteria and library expansion. Renovations include accessibility renovations, IT upgrades, geothermal heat pump system, and roof replacement.					9-12	1,593	\$21.8
TATE HS	Minor repairs.					9-12	119	\$0.08
TREC	Masonry repair, VAV rooftop HVAC system and water source heat pump, plaster repair.					9-12	126	\$3.2
WEST HS	Accessibility renovations, roof replacement, IT upgrades, HVAC system revisions & upgrades, electrical upgrades, window wall system replacement.					9-12	1,684	\$16.5
NEW HS	New 1,500 student high school.					9-12	1,500	\$65.3
	<b>2022-23 Projected K-12 Enrollment = 15,372</b>					<b>Total</b>	<b>15,629</b>	<b>\$252.0</b>